



Class 2 Power Supply 24V / 96W

**Part # 950035-24-096**

<b>Job Information</b> <i>Fill out project details for this product below</i>			
<b>Project</b>		<b>Location</b>	
<b>Contact</b>		<b>Date</b>	
<b>Product Number</b>		<b>Fixture Type</b>	

Essential plug and play power supply designed for compatibility with Omnify products. UL Class 2 certified and may be used virtually worldwide with a change to the AC power cord.



## KEY FEATURES



**High Reliability**



**Over 88% Efficiency**



**Class 2 Driver**

## APPLICATIONS

- Backlighting
- Large Formats
- Backlit Stone
- Backlit Graphics

## OVERVIEW



- Universal AC input (100 - 240V)
- Over voltage Protection
- Short Circuit Protection



# Plug-in Power Driver



Class 2 Power Supply 24V / 96W

**Part # 950035-24-096**

## SPECIFICATIONS

Model #	ZF120A-2404000
Part Number	950035-24-096
<b>Output</b>	
DC Voltage	24V
Rated Current	4A
Rated Power	96W
Efficiency	> 88% 115Vac/50Hz, 115Vac/60Hz, 230vac/50Hz 230vac/60Hz
Withstanding Voltage	1KV (line to line)
Isolation Resistance	> 10 M.Ω
<b>Input</b>	
Voltage Range	100VAC~240VAC
Frequency Range	50-60Hz
Input Current Limit	< 0.6A (rms) at 100 to 240 Vac
No Load Power Consumption	< 0.21W
Max. Input Power Consumption	< 110W
Inrush Current (Typ.)	≤50/80 A under cold start , 1st half cycle of 115/230 Vrms
Input Current Protection	5.2A-7.1A
<b>Protection</b>	
Short Circuit	Output Short HICCUP
Over Current Protection	> 4 A HICCUP
<b>Environment</b>	
Working TEMP.	0 C° ~ 40 C°
Rated Max. TEMP.	45 C°
Working Humidity	5% ~ 95% RH, non-condensing
<b>Wiring</b>	
DC Output Wire	16 AWG UL Approved • 1.2 m Length • DC Barrel Connector 5.5 (mm)x 2.1 (mm)
AC Inlet	C14 • 10A/250V, 65°C Class I • UL approved • AC cord included
<b>Others</b>	
Net. Weight	1.086 lbs (including AC cord)
Size	153mm x 60mm x 38mm



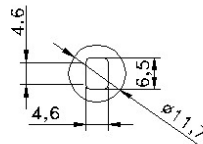
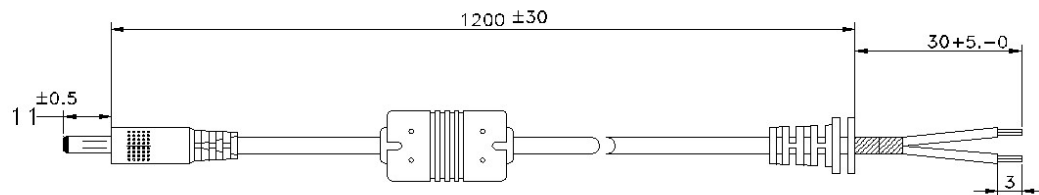
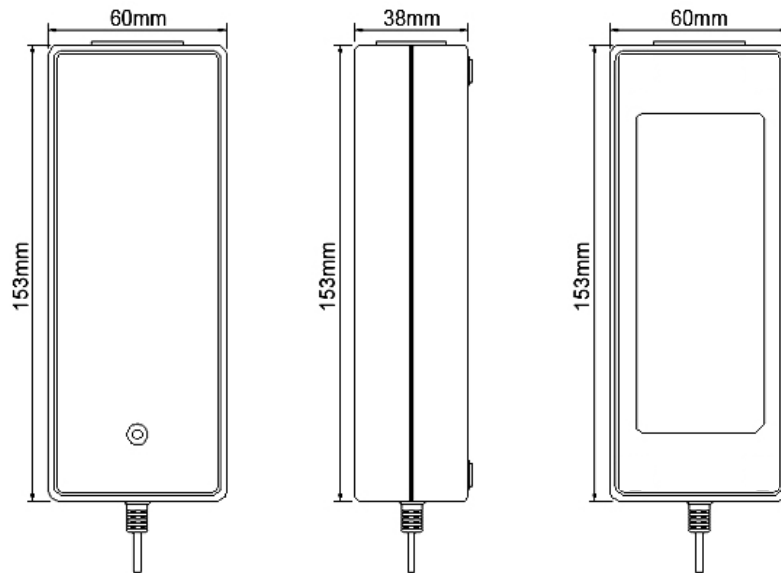
Class 2 Power Supply 24V / 96W

Part # 950035-24-096

## OVERVIEW

### DIMENSION

153mm x 60mm x 38mm L x W x H





# Plug-in Power Driver



Class 2 Power Supply 24V / 96W

**Part # 950035-24-096**

## ORDER INFORMATION

Product #	Voltage	Wattage
950035	24-24V DC	096 96 W

## EXAMPLE

**950035-24-096**

The specification number immediately above can be deconstructed as follows:

24V 96W Class 2; Voltage-24V; Wattage-96W



Class 2 Power Supply 24V / 96W

Part # 950035-24-096

## INSTALLATION

1. A 3 Core power cord is required, which has AC connector mating with IEC320 C13/C14 inlet of Unit.
2. Connect LED module with DC output connector according to the install manual provided by LED module or LED light supplier.
3. When installation is complete, switch on the mains supply.
4. Do NOT connect LED load(LED module) exceeding total 96W. It may cause over load problem.

**Read these instruction carefully. If any doubt, consult a qualified electrician.**

### SAFETY WARNING UNDER UL FOR USA MARKET

For USA market under UL1310, Cord-connected Type Class 2 Power unit.

## CAUTION

### RISK OF ELECTRIC SHOCK, DRY LOCATION USE ONLY.

Risk of equipment or circuit damage.

- Disconnect test leads from any circuit being tested before changing functions.
- Always disconnect the live test lead before disconnecting the common test lead.
- Do not create an electrical connection between battery terminals with a jump wire or tools.
- Do not ground any electrical terminal that has or may have power.
- Always unplug equipment from an electrical outlet when not in use.
- Never use the cord to pull a plug from an outlet. Grasp the plug and pull it to disconnect.
- If an extension cord is necessary, a cord with a current rating equal to more than that of the equipment should be used. Cords rated for less current than the equipment may overheat.
- Loop cord or cables loosely around equipment when storing.
- Use tools only as described in the tool user's manual.
- Use only the manufacturer's recommended attachments.

**For connection to a supply not in the U.S.A, use an attachment plug adaptor of the proper configuration for the power outlet.**



**Important safety instruction - Save these Instructions.**

**Danger - to reduce the risk of fire or electric shock, carefully follow these instructions.**

## WARNING



### RISK OF FIRE.

- Do not overload electric outlet and circuit
- Inspect wiring & plug on power supply to ensure no damage. Discontinue use if a frayed cord or loose prongs on a plug is discovered
- Do not disassemble, modify or repair the power supply or touch the interior of the power supply
- Do not allow any pieces of metal or conductors or any clippings or cuttings resulting from installation work to enter the power supply
- Do not install product in an environment outside the listed ambient temperature
- Install in a well-ventilated area free from explosive gases and vapors.
- Ensure a compatible LED fixture with the correct operating voltage is installed with this product.

### RISK OF ELECTRIC SHOCK.



- Do not attempt to disassemble any battery or remove any component projecting from or protecting the battery terminals.
- Prior to recycling, protect exposed terminals with heavy insulating tape to prevent shorting.
- Use extreme caution when working with circuits that have greater than 40 volts DC or 24 volts AC.
- Do not use electrical equipment on wet surfaces or exposed to rain.
- Always wear properly rated rubber insulated gloves when required or appropriate, particularly when working with voltages exceeding 40 volts DC or 24 volts AC.
- Do not use electrical equipment with damaged cords, damaged cables, or equipment that has been dropped or damaged until a qualified service person has examined it.

**Electric shock can cause injury.**



Class 2 Power Supply 24V / 96W

Part # 950035-24-096

## AC POWER PLUGS GUIDE (FOR REFERENCE ONLY)



USA



UK/Singapore



Europe/Korea



Japan



H.K./South Africa



Switzerland



Italy/Chile



Israel



India



Australia



China



Argentina